

emco

/ EFFICIENT SOLUTIONS FOR THE
SECURITY AND DEFENCE SECTOR!

DEFENCE



YOUR EXPERT FOR PRECISION IN DEFENCE TECHNOLOGY!

Innovative technologies for maximum precision in the defence sector

As one of Europe's leading suppliers of machine tools and technologies, EMCO GmbH offers tailor-made solutions in the field of turning and milling, perfectly adapted to the requirements of defence and security technology. Since our foundation in 1947 in Hallein, near Salzburg, we have grown from a small manufacturer of conventional lathes to an innovative company with over 800 employees and production sites in Austria and Italy. We have been part of Kuhn Holding GmbH since 2011. Thanks to state-of-the-art technologies and automated processes, we guarantee maximum precision and efficiency, even for the most demanding applications..

Why is EMCO the right choice for you? Machine solutions for the defence industry!

Time is of the essence and precision is crucial. Regardless of which area of the defence industry you operate in, whether it is the development of cutting-edge technologies, the production of precision components or the maintenance of complex systems, EMCO offers you tailor-made turning and milling solutions that are perfectly adapted to your specific requirements.

Our machines combine power, precision and reliability to guarantee you optimum performance in every situation. They have been specially developed to meet the most demanding requirements of defence technology. Whether you need high-precision components for safety-critical applications, flexible equipment for repair work or solutions for complex production processes, we have the right technology for you.

With our wide range of products and comprehensive expertise, we guarantee maximum precision, efficiency and reliability at all times. Trust in the quality and innovation of the EMCO product range to realise your projects safely and successfully.



HIGHLIGHTS

EMCO turning and milling machines combine

- Precision and accuracy
- Versatility
- Automation
- Robustness and durability
- Efficiency

✓ **Precision and accuracy:** our turning and milling machines are renowned for their ability to machine parts with high precision. Numerically controlled machines offer particularly accurate machining options, which are essential for complex geometries and tight tolerances.

✓ **Versatility:** EMCO machines are capable of machining a wide range of materials, including metals, plastics and composite materials. This allows the production of very different parts, from small components to large structural parts.

✓ **Automation:** our turning and milling machines are highly automated, which increases productivity and reduces the need for manual intervention. Automation increases production efficiency by reducing machining times and increasing repeatability.

✓ **Robustness and durability:** our machines are designed to ensure a long service life even under difficult working conditions and in case of intensive use. This makes them ideal for industrial applications where reliability is key.

✓ **Energy efficiency:** our product range is designed to minimise energy consumption and maximise performance. This allows for both reduced operating costs and a lower environmental impact.

OUR MACHINES SOLUTIONS FOR YOUR NEEDS

Discover what we have to offer

Technology for the most demanding requirements, developed for the defence industry.

In this brochure, we present a selection of our range of high-performance machines, specially designed for the specific requirements of military and security applications.

Whether you need compact, highly reliable machines for maintenance and repair or high-end automated solutions for complex production processes, our systems combine robustness and precision, efficiency and flexibility, state-of-the-art technology and many years of experience in the construction of special machines.

Our machines prove themselves every day under extreme conditions: in confined spaces, with high loads, in international applications. One thing is always at the forefront: reliable performance you can count on, without compromise and sustainable.

Discover our solutions and experience technological advantages in practice.

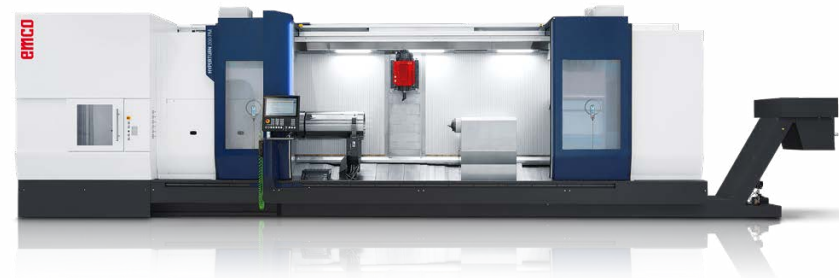
HYPERTURN 200 PM

- / Machining of structural parts
- / Production of complex components such as couplings, plates, brackets, steel shafts, connecting elements
- / Production of recurring components with high precision and speed

This series also includes other machine types: HYPERTURN 65 PM, ...



/ Slide assembly



MAXXTURN 95

- / Machining of structural parts
- / Production of complex components such as couplings, plates, brackets, steel shafts, connecting elements
- / Production of recurring components with high precision and speed

This series also includes other machine types: MAXXTURN 65, ...



/ Nose cone
/ Bulkhead IMU sensors



UMILL 1000

- / The stable gantry structure and the possibility of milling and turning allow the machining of complex components with a single clamping
- / Machining of precision components for housings or components with precise dimensions
- / Production of specific components such as supports and brackets and parts for various construction and mechanical applications

This series also includes other types of machines: UMILL 1500, ...



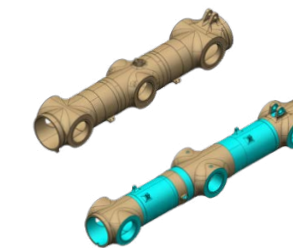
/ Slide
/ Servo bulkhead



DYNAMILL

- / Machining of large structural elements such as armored hull and turrets
- / Possibility of using different milling heads (with millesimal positioning and 5-axis) with optional automatic head change
- / 5-axis machining of complex parts such as nose cone and armored turrets

This series also includes other types of machines: DYNAMILL G5, ...



/ Landing gear





/ TOGETHER FOR YOUR SUCCESS

EMCO is your reliable partner in the defence industry. With our high-quality turning and milling machines, we help you to implement your projects efficiently, precisely and successfully. Take advantage of our know-how and many years of experience to take your production processes to the next level!

We look forward to receiving your enquiries and preparing customised quotations for machines that are perfectly tailored to your requirements.



Our team is at your disposal! Together, we will find the best solutions to successfully realise your projects.

Take a look at what we have to offer.

On the following four pages, we present our complete range of turning and milling machines: compact, powerful and versatile.

CNC TURNING AND MILLING CENTRES WITH POWERFUL MILLING SPINDLE AND TOOL MAGAZINE

HYPERTURN POWERMILL



HYPERTURN 200 PM



HYPERTURN 100 PM



HYPERTURN 65 PM HP



HYPERTURN 65 PM G2



HYPERTURN 65 PM

HIGH-PERFORMANCE CNC TURNING CENTRES WITH TURRET INCLUDING MILLING DRIVE AND Y-AXIS

HYPERTURN



HYPERTURN 110



HYPERTURN 95



HYPERTURN 65 TT



HYPERTURN 65 DT



HYPERTURN 50

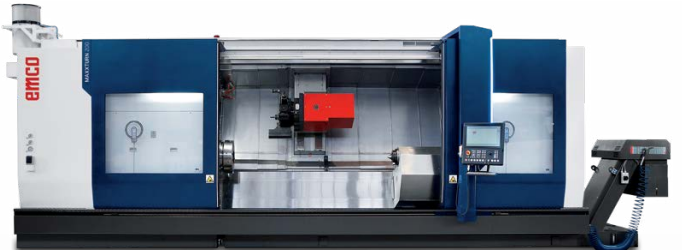


HYPERTURN 45

TURNING

UNIVERSAL CNC TURNING CENTRES WITH MILLING DRIVE AND Y-AXIS

MAXXTURN



MAXXTURN 200



MAXXTURN 110



MAXXTURN 95



MAXXTURN 65-1000



MAXXTURN 65 G2



MAXXTURN 45 G2



MAXXTURN 25

CNC TURNING MACHINES

EMCOTURN

UNIVERSALTURN

S-SERIES



EMCOTURN E65



EMCOTURN E25



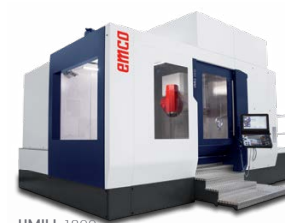
UNIVERSALTURN 50



S 65

UNIVERSAL MACHINING CENTRES FOR SIMULTANEOUS 5-AXIS MACHINING

UMILL



UMILL 1800



UMILL 1500



UMILL 1000



UMILL 750



UMILL 630

TRAVELLING COLUMN MACHINING CENTRES

MMV



MMV 3200 / MMV 4200 / MMV 5200 / MMV 6200



MMV 2000

GANTRY MILLING MACHINES FOR LARGE WORKPIECES

GANTRY MILLING MACHINES



DYNAMILL



DYNAMILL G5



MEGAMILL



POWMILL

TRAVELLING COLUMN MACHINES FOR LARGE WORKPIECES

TRAVELLING COLUMN MILLING MACHINES



ECOMILL PLUS



ECOMILL



ECOMILL S



MECMILL PLUS



MECMILL

4+1-AXIS VERTICAL MACHINING CENTRES

MAXXMILL

AND FOR 3-AXIS MACHINING

EMCOMILL



MAXXMILL 750



MAXXMILL 630



EMCOMILL 1800



EMCOMILL 1200



EMCOMILL E350

ROOTS IN EUROPE.
STANDARDS FOR THE WORLD.

beyond standard /

EMCO GmbH / Salzburger Str. 80 / 5400 Hallein-Taxach / Austria / T +43 6245891-0 / info.at@emco-world.com

www.emco-world.com